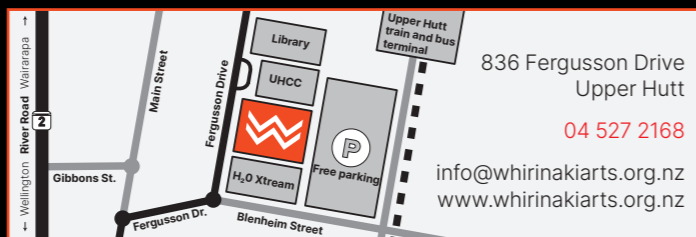


LET'S  
PLAY!



JANUARY – JUNE 2026

INFORMATION



**10am–4pm, seven days a week**  
One hour prior to performance on show nights

**BOOKING TICKETS:** to book tickets, either pop in to Whirinaki Whare Taonga, call 04 527 2168, or book online at [www.whirinakiarts.org.nz](http://www.whirinakiarts.org.nz). Booking fees online apply.

**EAT & DRINK:** for opening hours of Dough Bakery, please visit our website

**SHOP:** our shop is open every day 10am – 4pm for the very best New Zealand made art, design and gifts.

**FREE Wifi:** Wifi is available throughout the building.

**VENUE HIRE:** whether you're holding a conference, a public meeting, a wedding, providing corporate training, hosting a business dinner or giving a presentation, Whirinaki Whare Taonga can meet your needs. Ask us how we can help you host a memorable event.

Enquiries to 04 527 2168 or [info@whirinakiarts.org.nz](mailto:info@whirinakiarts.org.nz)



ANNUAL PARTNERS



Information is correct at time of printing, but may be subject to change, including late additions, cancellations, and booked-out sessions.

PUBLIC PROGRAMMES



POP-UP BOARD GAMES BAR

EVERY WEDNESDAY IN MARCH · FREE · 5–8PM  
NO BOOKING REQUIRED

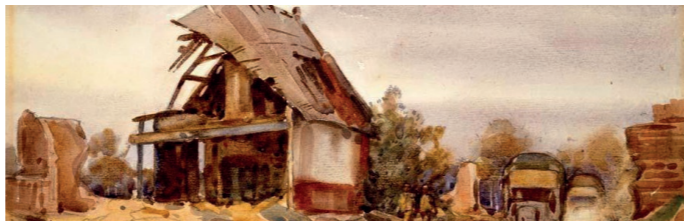
Roll the dice, grab a drink at Dough Bakery, and let the games begin! Our once-a-week pop-up Board Games Bar brings together great drinks, tasty bites, and a huge stack of games—from timeless classics to party favourites.



BOGAN FILM CLASSICS

SATURDAY 14 MARCH & SUNDAY 15 MARCH · TIMES VARY  
\$15 PER PERSON

Mullet, muscle cars, and movie mayhem. The Bogan Film Festival is a loud and proud celebration of the big screen at its roughest and rowdiest, from cult NZ favs to over-the-top action flicks. Check out [www.whirinakiarts.org.nz](http://www.whirinakiarts.org.nz) for the full timetable.



SKETCHES FROM THE TRENCHES WITH ANZAC BISCUITS

ANZAC DAY 25 APRIL · 7AM–12 NOON · FREE · NO BOOKING REQUIRED

After the ANZAC Day Parade, drop in for a special morning at the Sketches from the Trenches exhibition. Enjoy a complimentary ANZAC biscuit, take in Nugent Welch's moving wartime sketches, and add your mark to a collective artwork honouring remembrance.

ACTIVITIES FOR CHILDREN



BRUSH, INK, IMAGINE

THURSDAY 8 JANUARY AND TUESDAY 20 JANUARY · 10AM–2PM  
FREE · NO BOOKING REQUIRED

Join us for a hands-on Japanese Calligraphy Workshop for children, where creativity meets culture. Using real brushes and ink, tamariki will explore the ancient art of shodō (the “way of writing”) in a fun and friendly setting.



MR FUNGUS

THURSDAY 9 APRIL · 10AM · \$12 PER TICKET · BOOKINGS ESSENTIAL

Mr Fungus brings a silly show that will amuse and delight kids of all ages. Featuring comedy, juggling and mime, with scrumptious and catchy backing soundtracks.

Presented by Whirinaki in association with Arts on Tour



BUILD YOUR OWN BOARD GAME

THURSDAY 16 APRIL AND FRIDAY 17 APRIL · 10AM–2PM  
FREE · NO BOOKING REQUIRED

Join us for this free creative session in the school holidays where you can design and build your own board game.

MUSIC & THEATRE @ WHIRINAKI



SEAN KELLY AND THE SUPER 8'S

SATURDAY 30 MAY · 8PM · \$25 PER TICKET  
\$20 FRIENDS CONCESSION · BOOKINGS ESSENTIAL

Irish folk music and stories, with old movies. Enjoy live Irish music played to the backdrop of Super 8 movies taken in Ireland, with Sean Kelly on vocals, whistles, bodhran and guitar, Jono Lonie on fiddle and mandolin and Maree Limpus on cello.

Presented by Whirinaki in association with Arts on Tour



SOCIAL ANIMAL

SATURDAY 6 JUNE · 8PM · \$25 PER TICKET  
\$20 FRIENDS CONCESSION · BOOKINGS ESSENTIAL

You can't teach an old dog new tricks... can you? Biting satire and fiercely funny solo comedy features in this roller-coaster show about the healing power of an animal.

Presented by Whirinaki in association with Arts on Tour



CARNIVOROUS PLANT SOCIETY

SUNDAY 26 JULY · 8PM · \$25 PER TICKET · BOOKINGS ESSENTIAL

A psychedelic exotic jazz band featuring vibraphone, tuba, harmonica, pan flute and more – all brought to life against a stunning backdrop of hand-drawn animations.

Presented by Whirinaki in association with Arts on Tour

Classical  
Expressions 2026  
Let Music Astound You

Aotango Quintet

Thursday 30 April, 7.30pm

Michael Houston

Thursday 21 May, 7.30pm

Jian Liu

Thursday 18 June, 7.30pm

The Elouan Quartet  
with Bridget Douglas

Thursday 16 July, 7.30pm

Dolfin-Lin Duo

Thursday 3 September, 7.30pm

Aroha String Quartet

Thursday 8 October, 7.30pm



Season Subscription tickets (6 tickets): \$165 (\$27.50 per ticket)  
Individual Tickets: \$38 · Friends of Whirinaki Discount \$35 · Under 16 years FREE  
Groups of six or more \$30 · Booking fees apply  
Proudly supported by Summerset at The Course



## LATE NITE SOUND BITE

5.30-8PM · KOHA ENTRY

Late Nite Sound Bite is a once a week late night every Friday during February 2025, featuring fresh NZ music, gorgeous food at Dough Bakery and all galleries open until 8pm. Live music starts from 5.30pm and entry is by Koha.

**6 February**  
Andrew London Duo

**13 February**  
Hobnail Boots

**20 February**  
Wooden Box Band

**27 February**  
Lisa Tomlins and Wade Reeves

## LUNCHTIME LIVE!

A series of lunchtime concerts given by performance students from Te Kōkī New Zealand School of Music.  
1pm · Entry by donation

**March 31**  
Strings

**April 28**  
Piano

**May 12**  
Voice

**May 26**  
Winds and Brass

**July 14**  
Strings

**August 11**  
Voice

**September 8**  
Winds and Brass

**October 6**  
Piano

*Lunchtime Live! is brought to you by Whirinaki Whare Taonga, The Upper Hutt Grand Piano Trust and Te Kōkī New Zealand School of music at Victoria University of New Zealand.*

## EXHIBITIONS



### LET'S PLAY

24 DECEMBER 2025 – 19 JULY 2026

Are you a Snakes and Ladders superstar? A Chess Champion? A Monopoly Master? Welcome to the colourful and creative world of board games at Whirinaki. Celebrating the joy, excitement (and occasional frustration) of playing board games, this exhibition includes hands on games for everyone to play (young and old) such as family favourites Monopoly, Scrabble and Connect Four, as well as traditional games like chess. Get your Game On!

*Curated and developed by Whirinaki Whare Taonga. Proudly supported by Nuku Ora.*



### THE SUPERLATIVE ARTISTRY OF JAPAN

20 DECEMBER 2025 – 29 MARCH 2026

This exhibition captures Japan's creative culture and monozukuri spirit through a cohesive collection of work from a variety of art genres. Elaborate Meiji era (1868-1912) works are shown alongside kogeï (traditional arts & crafts) as well as contemporary art, craft works, food samples, and shokugan (small toys sold with candy). All illustrate a strong commitment to craftsmanship and a high level of perfection and often an element of surprise.

*Curated by Yuji Yamashita (Professor, Meiji Gakuin University) and toured by The Embassy of Japan in New Zealand.*

*Image credit: Kaiyodo, Capsule Q, 2013-2017, PVC, ABS. Photo © Shu Nakagawa.*



### NUGENT WELCH; SKETCHES FROM THE TRENCHES

4 APRIL – 12 JULY 2026

Nugent Welch was New Zealand's first 'war artist.' The works he made stand as a unique and highly personal record of New Zealand's involvement in the First World War from the perspective of a soldier who served in the trenches. This exhibition explores what it was like on a WW1 battlefield through Nugent's intimate landscape watercolours and follows his journey back home to his early impressionistic body of work.

*Proudly supported by Heretaunga Bookfest Charitable Trust*

*Image credit: Captured German Howitzer, Haucourt, Nugent Welch, c.1918*



### DARCY SOLIA: LE FAIFA 'ATO 'ANGA TUMAU

7 FEBRUARY – 19 APRIL

Upper Hutt Artist Darcy Solia explores the limitless potential of art, focusing on what it can become rather than what is expected. Drawing inspiration from a diverse range of artists and ideas. This exhibition reflects an evolving artistic journey, showcasing varied influences while expressing Solia's distinctive and growing voice.

*Image credit: Darcy Solia, Sina Ma le Tuna, acrylic on canvas 2025*

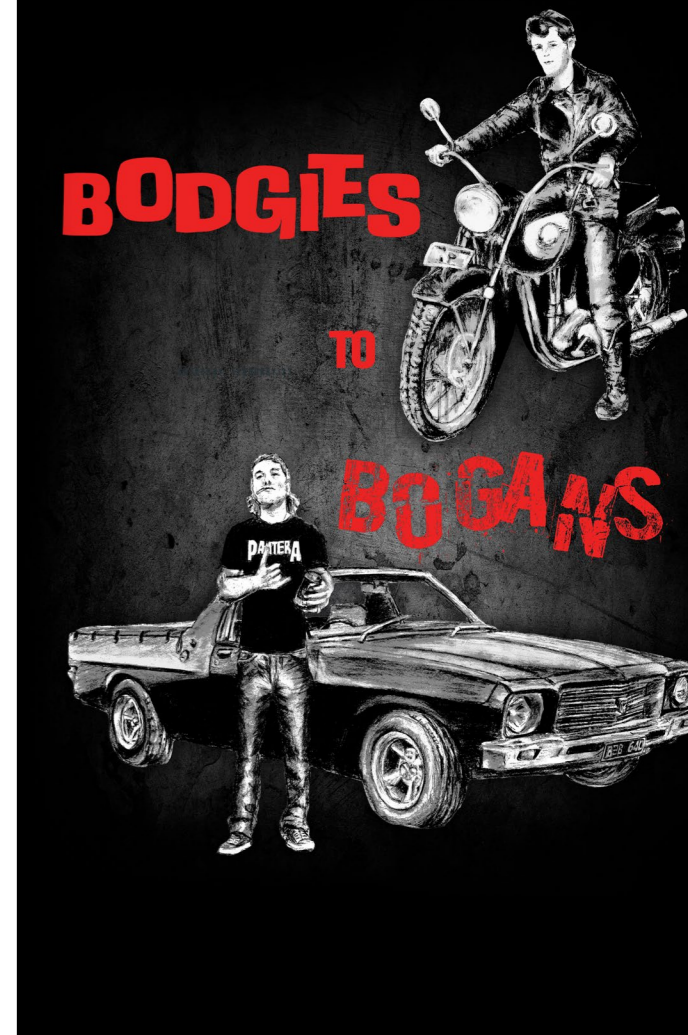


### RŪAUMOKO: RESTLESS LAND

25 APRIL – 2 AUGUST

This hands-on, interactive exhibition delves into the realm of Rūaumoko, the atua of volcanoes and earthquakes, and the youngest child of Ranginui and Papatūānuku. You will be taken on a journey through interactive activities, tectonic plate models, volcanic rock samples, a shake table, and kōrero from Rūaumoko.

*Developed and toured by the Museum of New Zealand Te Papa Tongarewa*



### BODGIES TO BOGANS

UNTIL 17 OCTOBER 2026

Bodgies to Bogans tells the story of the juvenile delinquencies and teenager rebellion of the 1950s to the Bogans of the 1980s. Whether you were listening to rock and roll, riding motorcycles and drinking milk shakes at milk bars in the 50s or growing a mullet and thrashing out the leathers to heavy metal in the 80s, this exhibition documents the history of youth culture in Upper Hutt, and New Zealand.

*Curated and developed by Whirinaki Whare Taonga. Proudly supported by The Rimutaka Trust.*